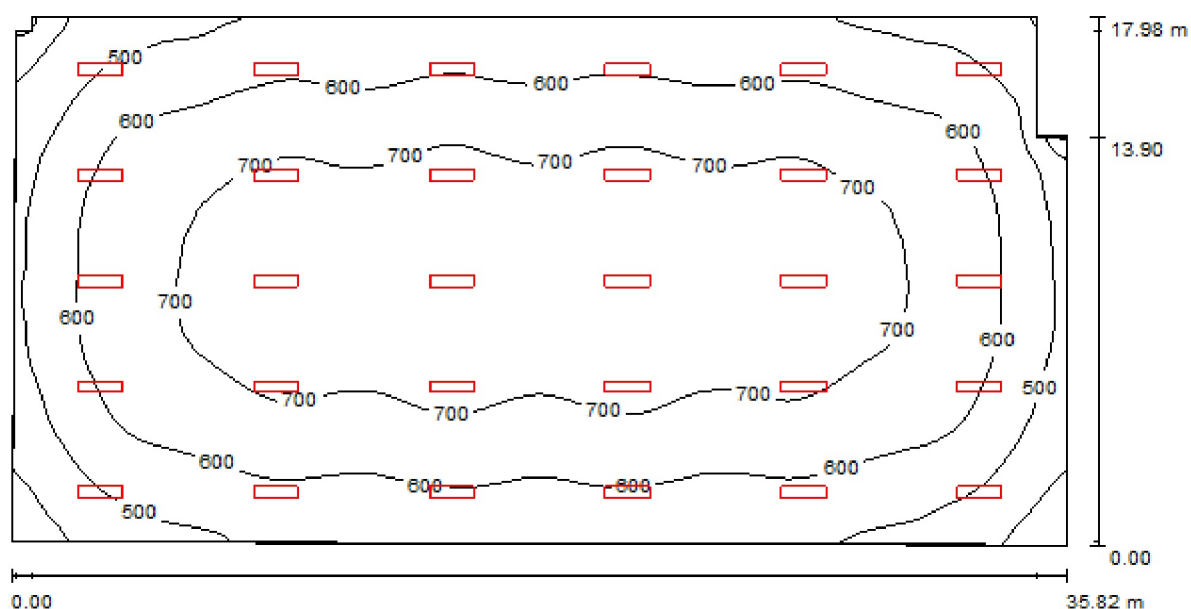


Operator
Telephone
Fax
e-Mail

sporta zale (volejbols) / Summary



Height of Room: 7.200 m, Mounting Height: 7.200 m, Maintenance factor: 0.80

Values in Lux, Scale 1:257

Surface	ρ [%]	E_{av} [lx]	E_{min} [lx]	E_{max} [lx]	u_0
Workplane	/	627	291	761	0.464
Floor	20	606	344	742	0.568
Ceiling	50	139	117	191	0.840
Walls (8)	50	330	120	705	/

Workplane:

Height: 0.750 m
Grid: 128 x 64 Points
Boundary Zone: 0.010 m

Illuminance Quotient (according to LG7): Walls / Working Plane: 0.531, Ceiling / Working Plane: 0.221.

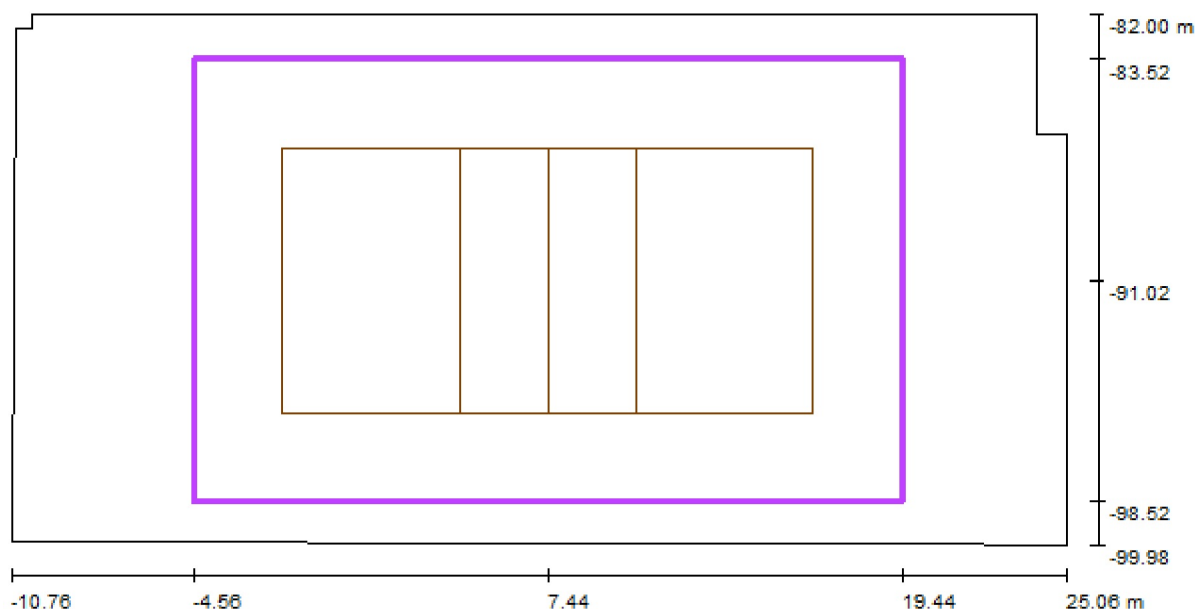
Luminaire Parts List

No.	Pieces	Designation (Correction Factor)	Φ (Luminaire) [lm]	Φ (Lamps) [lm]	P [W]
1	30	LUXIONA POLAND S.A. RSXXXT5MPRM RUBIN SPORT 4x80W T5 MICRO-PRM KR E 34 (1.000)	20008	28000	330.0
Total:			600255	840000	9900.0

Specific connected load: $15.56 \text{ W/m}^2 = 2.48 \text{ W/m}^2/100 \text{ lx}$ (Ground area: 636.26 m^2)

Operator
Telephone
Fax
e-Mail

sporta zale (volejbols) / Volleyball 1 Calculation Grid (PA) / Summary



Scale 1 : 257

Position: (7.441 m, -91.024 m, 0.000 m)
Size: (24.000 m, 15.000 m)
Rotation: (0.0°, 0.0°, 0.0°)
Type: Normal, Grid: 13 x 9 Points
Belongs to the following sport arena: Volleyball 1

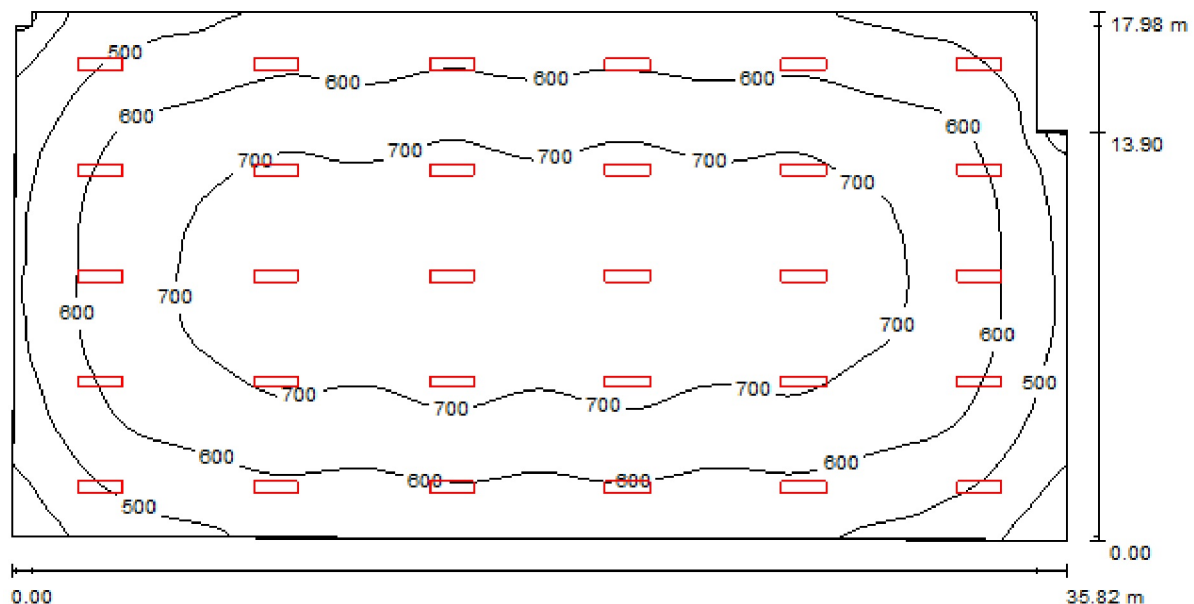
Results overview

No.	Type	E_{av} [lx]	E_{min} [lx]	E_{max} [lx]	u0	E_{min} / E_{max}	$E_{h\ m} / E_m$	H [m]	Camera
1	perpendicular	669	557	739	0.83	0.75	/	0.000	/

$E_{h\ m} / E_m$ = Relationship between middle horizontal and vertical illuminance, H = Measuring Height

Operator
Telephone
Fax
e-Mail

sporta zale (basketbols) / Summary



Height of Room: 7.200 m, Mounting Height: 7.200 m, Maintenance factor: 0.80

Values in Lux, Scale 1:257

Surface	ρ [%]	E_{av} [lx]	E_{min} [lx]	E_{max} [lx]	u_0
Workplane	/	627	291	761	0.464
Floor	20	606	344	742	0.568
Ceiling	50	139	117	191	0.840
Walls (8)	50	330	120	705	/

Workplane:

Height: 0.750 m
Grid: 128 x 64 Points
Boundary Zone: 0.010 m

Illuminance Quotient (according to LG7): Walls / Working Plane: 0.531, Ceiling / Working Plane: 0.221.

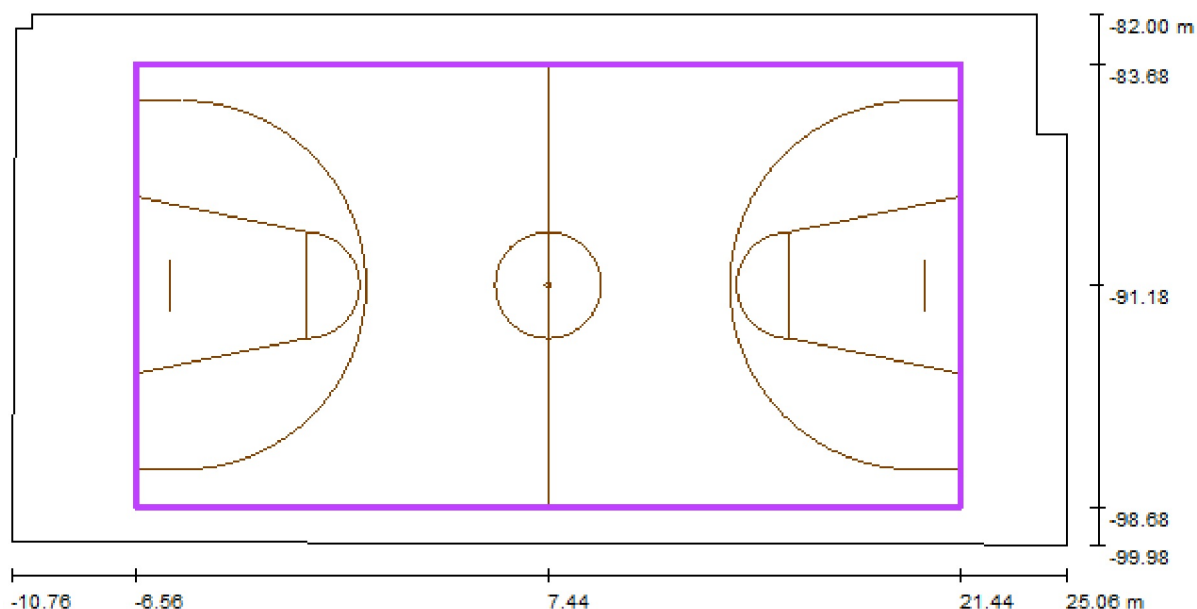
Luminaire Parts List

No.	Pieces	Designation (Correction Factor)	Φ (Luminaire) [lm]	Φ (Lamps) [lm]	P [W]
1	30	LUXIONA POLAND S.A. RSXXXT5MPRM RUBIN SPORT 4x80W T5 MICRO-PRM KR E 34 (1.000)	20008	28000	330.0
Total:			600255	840000	9900.0

Specific connected load: $15.56 \text{ W/m}^2 = 2.48 \text{ W/m}^2/100 \text{ lx}$ (Ground area: 636.26 m^2)

Operator
Telephone
Fax
e-Mail

sporta zale (basketbols) / Basketball 1 Calculation Grid (PA) / Summary



Scale 1 : 257

Position: (7.435 m, -91.178 m, 0.000 m)
Size: (28.000 m, 15.000 m)
Rotation: (0.0°, 0.0°, 0.0°)
Type: Normal, Grid: 13 x 7 Points
Belongs to the following sport arena: Basketball 1

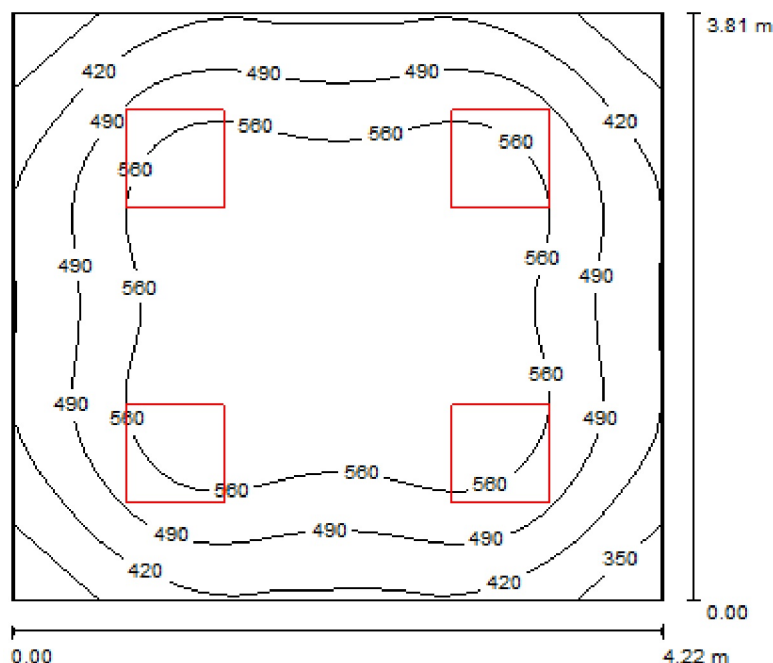
Results overview

No.	Type	E_{av} [lx]	E_{min} [lx]	E_{max} [lx]	u0	E_{min} / E_{max}	$E_{h\ m} / E_m$	H [m]	Camera
1	perpendicular	662	534	740	0.81	0.72	/	0.000	/

$E_{h\ m} / E_m$ = Relationship between middle horizontal and vertical illuminance, H = Measuring Height

Operator
Telephone
Fax
e-Mail

Telpa Nr.4 KABINETS / Summary



Height of Room: 2.850 m, Mounting Height: 2.850 m, Maintenance factor: 0.80

Values in Lux, Scale 1:49

Surface	ρ [%]	E_{av} [lx]	E_{min} [lx]	E_{max} [lx]	$u0$
Workplane	/	512	296	627	0.578
Floor	20	421	272	514	0.646
Ceiling	70	99	77	112	0.780
Walls (4)	50	226	76	380	/

Workplane:

Height: 0.750 m
Grid: 32 x 32 Points
Boundary Zone: 0.010 m

UGR

Left Wall
Lower Wall
(CIE, SHR = 1.00.)

Lengthways-

11
11

Across

17
15

to luminaire axis

Illuminance Quotient (according to LG7): Walls / Working Plane: 0.447, Ceiling / Working Plane: 0.194.

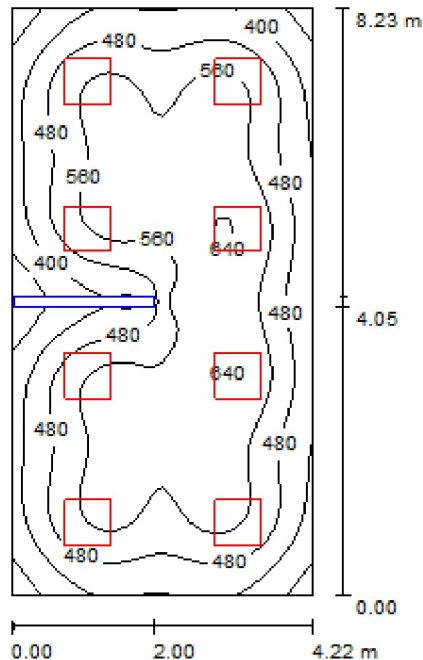
Luminaire Parts List

No.	Pieces	Designation (Correction Factor)	Φ (Luminaire) [lm]	Φ (Lamps) [lm]	P [W]
1	4	NORTHCLIFFE 1000295 Breeze 418 B33 7CR (1.000)	3464	5400	84.0
Total:			13856	21600	336.0

Specific connected load: $20.90 \text{ W/m}^2 = 4.08 \text{ W/m}^2/100 \text{ lx}$ (Ground area: 16.08 m^2)

Operator
Telephone
Fax
e-Mail

Telpa Nr.2, 3 KABINETS / Summary



Height of Room: 2.850 m, Mounting Height: 2.850 m, Maintenance factor: 0.80

Values in Lux, Scale 1:106

Surface	ρ [%]	E_{av} [lx]	E_{min} [lx]	E_{max} [lx]	u_0
Workplane	/	507	268	647	0.529
Floor	20	425	162	567	0.382
Ceiling	70	88	56	101	0.632
Walls (4)	50	207	54	373	/

Workplane:

Height: 0.750 m
Grid: 64 x 32 Points
Boundary Zone: 0.010 m

Illuminance Quotient (according to LG7): Walls / Working Plane: 0.405, Ceiling / Working Plane: 0.174.

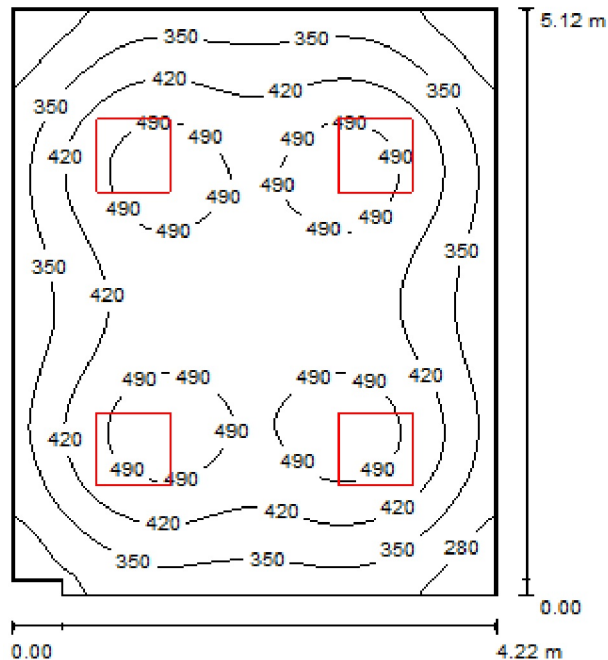
Luminaire Parts List

No.	Pieces	Designation (Correction Factor)	Φ (Luminaire) [lm]	Φ (Lamps) [lm]	P [W]
1	8	NORTHCLIFFE 1000295 Breeze 418 B33 7CR (1.000)	3464	5400	84.0
Total:			27713	43200	672.0

Specific connected load: $19.35 \text{ W/m}^2 = 3.81 \text{ W/m}^2/100 \text{ lx}$ (Ground area: 34.73 m^2)

Operator
Telephone
Fax
e-Mail

Telpa Nr.16 KABINETS / Summary



Height of Room: 2.850 m, Mounting Height: 2.850 m, Maintenance factor: 0.80

Values in Lux, Scale 1:66

Surface	ρ [%]	E_{av} [lx]	E_{min} [lx]	E_{max} [lx]	$u0$
Workplane	/	412	223	529	0.540
Floor	20	347	217	423	0.626
Ceiling	70	76	59	85	0.779
Walls (6)	50	171	49	268	/

Workplane:

Height: 0.750 m
Grid: 64 x 64 Points
Boundary Zone: 0.010 m

Illuminance Quotient (according to LG7): Walls / Working Plane: 0.410, Ceiling / Working Plane: 0.184.

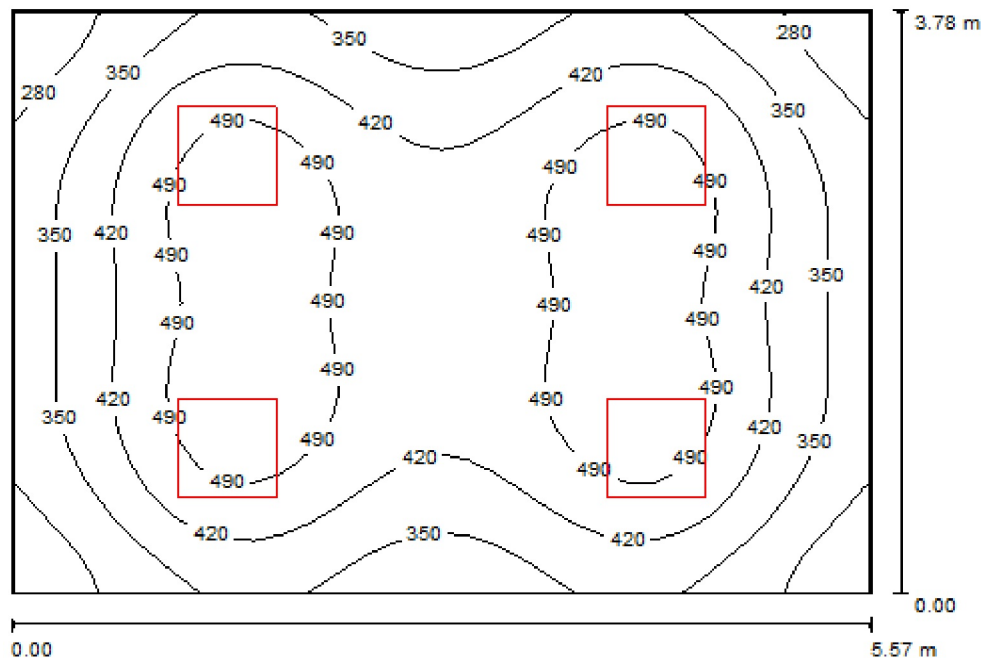
Luminaire Parts List

No.	Pieces	Designation (Correction Factor)	Φ (Luminaire) [lm]	Φ (Lamps) [lm]	P [W]
1	4	NORTHCLIFFE 1000295 Breeze 418 B33 7CR (1.000)	3464	5400	84.0
Total:			13856	21600	336.0

Specific connected load: $15.59 \text{ W/m}^2 = 3.78 \text{ W/m}^2/100 \text{ lx}$ (Ground area: 21.55 m^2)

Operator
Telephone
Fax
e-Mail

Telpa Nr.6 KABINETS / Summary



Height of Room: 2.850 m, Mounting Height: 2.850 m, Maintenance factor: 0.80

Values in Lux, Scale 1:49

Surface	ρ [%]	E_{av} [lx]	E_{min} [lx]	E_{max} [lx]	$u0$
Workplane	/	418	229	547	0.547
Floor	20	351	220	434	0.627
Ceiling	70	77	59	86	0.767
Walls (4)	50	174	55	299	/

Workplane:

Height: 0.750 m
Grid: 32 x 32 Points
Boundary Zone: 0.010 m

UGR

Left Wall
Lower Wall
(CIE, SHR = 1.00.)

Lengthways-

11
12

Across

17
15

to luminaire axis

Illuminance Quotient (according to LG7): Walls / Working Plane: 0.413, Ceiling / Working Plane: 0.185.

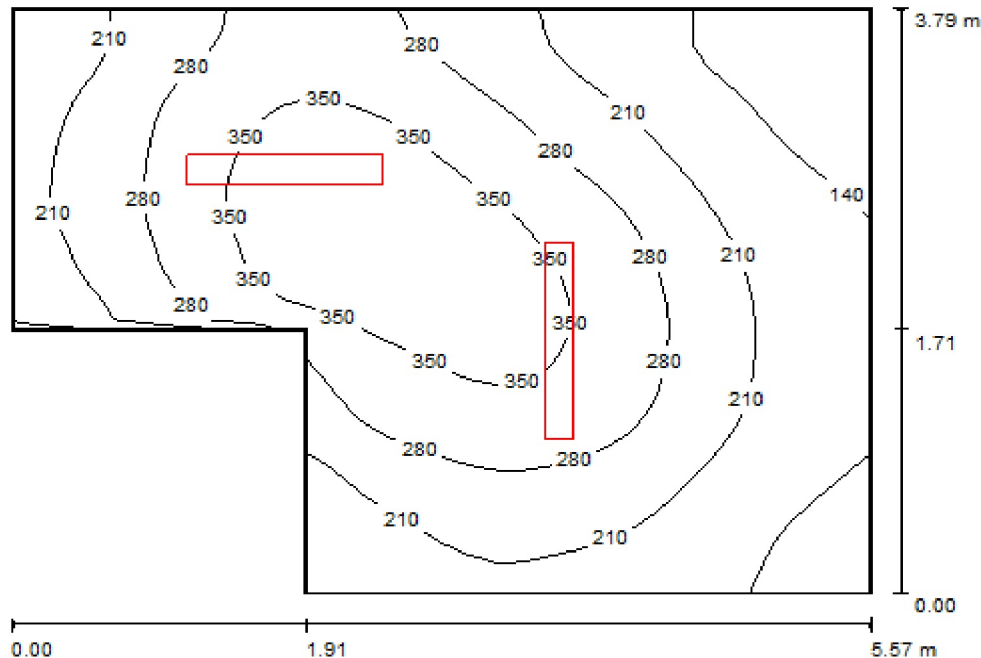
Luminaire Parts List

No.	Pieces	Designation (Correction Factor)	Φ (Luminaire) [lm]	Φ (Lamps) [lm]	P [W]
1	4	NORTHCLIFFE 1000295 Breeze 418 B33 7CR (1.000)	3464	5400	84.0
Total:			13856	21600	336.0

Specific connected load: $15.96 \text{ W/m}^2 = 3.81 \text{ W/m}^2/100 \text{ lx}$ (Ground area: 21.05 m^2)

Operator
Telephone
Fax
e-Mail

Telpa Nr.9 / Summary



Height of Room: 2.850 m, Mounting Height: 2.850 m, Maintenance factor: 0.80

Values in Lux, Scale 1:49

Surface	ρ [%]	E_{av} [lx]	E_{min} [lx]	E_{max} [lx]	u_0
Workplane	/	252	95	397	0.376
Floor	20	199	107	277	0.535
Ceiling	70	107	44	538	0.411
Walls (6)	50	148	71	449	/

Workplane:

Height: 0.750 m
Grid: 32 x 32 Points
Boundary Zone: 0.010 m

Illuminance Quotient (according to LG7): Walls / Working Plane: 0.629, Ceiling / Working Plane: 0.424.

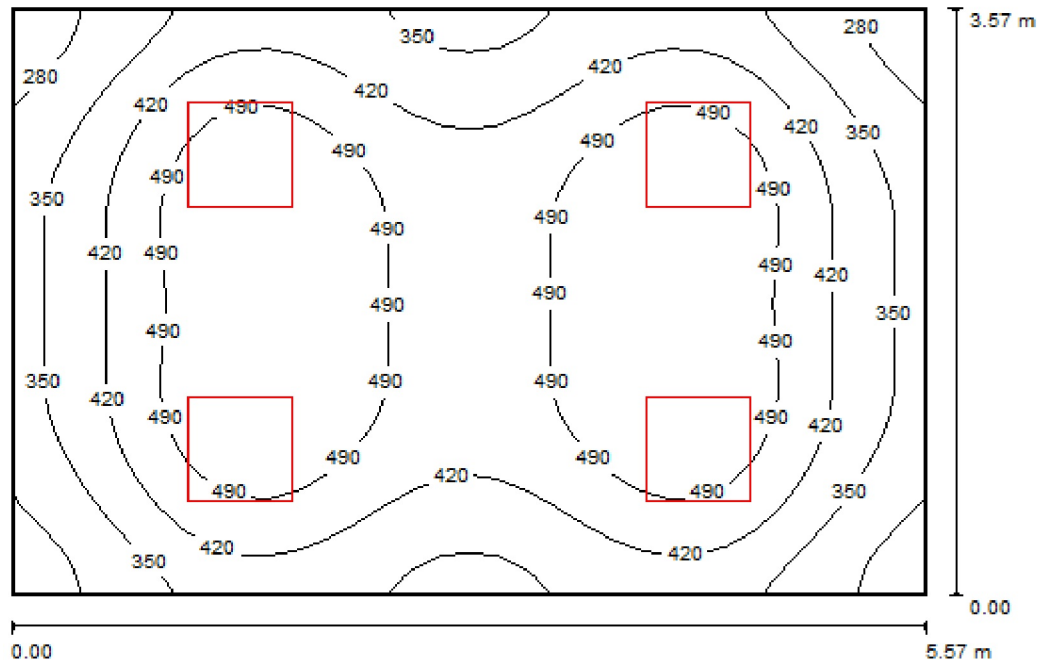
Luminaire Parts List

No.	Pieces	Designation (Correction Factor)	Φ (Luminaire) [lm]	Φ (Lamps) [lm]	P [W]
1	2	NORTHCLIFFE 1000485 Euros 236 H10 PRZ (1.000)	4623	6700	84.0
Total:			9246	13400	168.0

Specific connected load: $9.40 \text{ W/m}^2 = 3.73 \text{ W/m}^2/100 \text{ lx}$ (Ground area: 17.88 m^2)

Operator
Telephone
Fax
e-Mail

Telpa Nr.15 / Summary



Height of Room: 2.850 m, Mounting Height: 2.850 m, Maintenance factor: 0.80

Values in Lux, Scale 1:46

Surface	ρ [%]	E_{av} [lx]	E_{min} [lx]	E_{max} [lx]	$u0$
Workplane	/	436	242	569	0.555
Floor	20	363	230	450	0.633
Ceiling	70	81	62	91	0.768
Walls (4)	50	184	59	330	/

Workplane:

Height: 0.750 m
Grid: 32 x 32 Points
Boundary Zone: 0.010 m

UGR

Left Wall
Lower Wall
(CIE, SHR = 1.00.)

Lengthways-

11
12

Across

17
15

to luminaire axis

Illuminance Quotient (according to LG7): Walls / Working Plane: 0.419, Ceiling / Working Plane: 0.186.

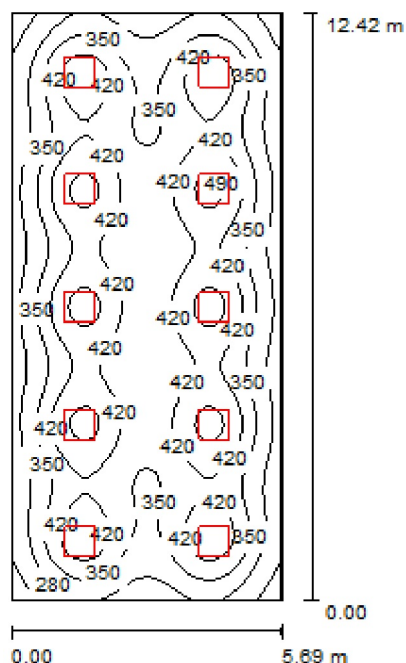
Luminaire Parts List

No.	Pieces	Designation (Correction Factor)	Φ (Luminaire) [lm]	Φ (Lamps) [lm]	P [W]
1	4	NORTHCLIFFE 1000295 Breeze 418 B33 7CR (1.000)	3464	5400	84.0
Total:			13856	21600	336.0

Specific connected load: $16.90 \text{ W/m}^2 = 3.88 \text{ W/m}^2/100 \text{ lx}$ (Ground area: 19.88 m^2)

Operator
Telephone
Fax
e-Mail

Telpa Nr.5 2STAVS / Summary



Height of Room: 2.850 m, Mounting Height: 2.850 m, Maintenance factor: 0.80

Values in Lux, Scale 1:160

Surface	ρ [%]	E_{av} [lx]	E_{min} [lx]	E_{max} [lx]	$u0$
Workplane	/	371	174	519	0.469
Floor	20	336	182	413	0.542
Ceiling	70	66	47	72	0.706
Walls (4)	50	139	54	255	/

Workplane:

Height: 0.750 m
Grid: 32 x 64 Points
Boundary Zone: 0.010 m

UGR

Left Wall
Lower Wall
(CIE, SHR = 1.00.)

Lengthways-

13
12

Across

18
18

to luminaire axis

Illuminance Quotient (according to LG7): Walls / Working Plane: 0.350, Ceiling / Working Plane: 0.178.

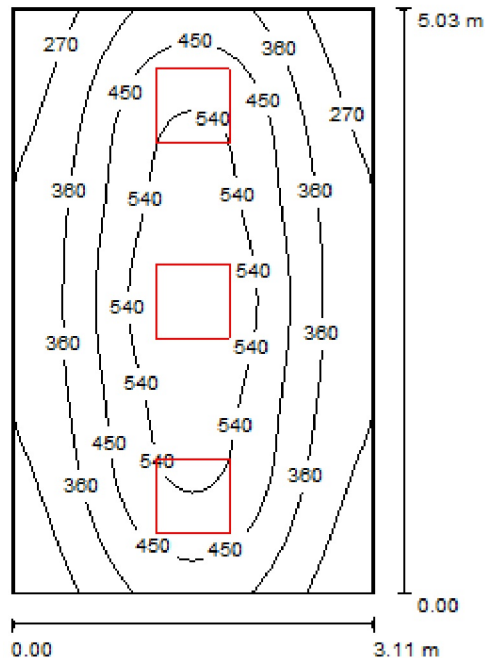
Luminaire Parts List

No.	Pieces	Designation (Correction Factor)	Φ (Luminaire) [lm]	Φ (Lamps) [lm]	P [W]
1	10	NORTHCLIFFE 1000295 Breeze 418 B33 7CR (1.000)	3464	5400	84.0
Total:			34641	54000	840.0

Specific connected load: $11.89 \text{ W/m}^2 = 3.20 \text{ W/m}^2/100 \text{ lx}$ (Ground area: 70.67 m^2)

Operator
Telephone
Fax
e-Mail

Telpa Nr.4 2STAVS / Summary



Height of Room: 2.850 m, Mounting Height: 2.850 m, Maintenance factor: 0.80

Values in Lux, Scale 1:65

Surface	ρ [%]	E_{av} [lx]	E_{min} [lx]	E_{max} [lx]	$u0$
Workplane	/	412	203	621	0.493
Floor	20	334	203	444	0.609
Ceiling	70	72	52	86	0.716
Walls (4)	50	162	51	486	/

Workplane:

Height: 0.750 m
Grid: 32 x 32 Points
Boundary Zone: 0.010 m

UGR

Left Wall
Lower Wall
(CIE, SHR = 1.00.)

Lengthways-

12
11

Across

15
17

to luminaire axis

Illuminance Quotient (according to LG7): Walls / Working Plane: 0.381, Ceiling / Working Plane: 0.175.

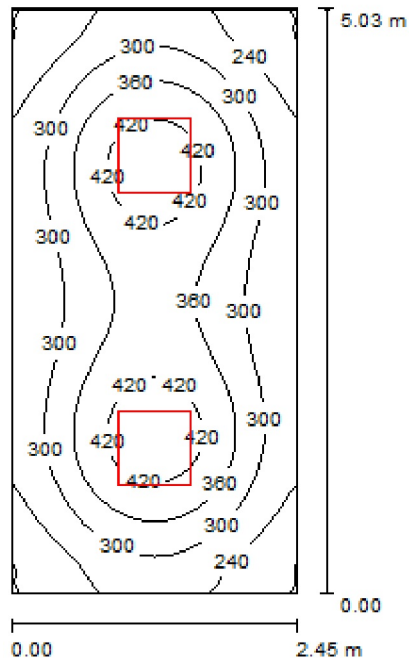
Luminaire Parts List

No.	Pieces	Designation (Correction Factor)	Φ (Luminaire) [lm]	Φ (Lamps) [lm]	P [W]
1	3	NORTHCLIFFE 1000295 Breeze 418 B33 7CR (1.000)	3464	5400	84.0
Total:			10392	16200	252.0

Specific connected load: $16.14 \text{ W/m}^2 = 3.92 \text{ W/m}^2/100 \text{ lx}$ (Ground area: 15.61 m^2)

Operator
Telephone
Fax
e-Mail

Telpa Nr.3 2STAVS / Summary



Height of Room: 2.850 m, Mounting Height: 2.850 m, Maintenance factor: 0.80

Values in Lux, Scale 1:65

Surface	ρ [%]	E_{av} [lx]	E_{min} [lx]	E_{max} [lx]	u_0
Workplane	/	322	175	452	0.542
Floor	20	253	163	308	0.643
Ceiling	70	57	40	63	0.708
Walls (4)	50	132	40	247	/

Workplane:

Height: 0.750 m
Grid: 32 x 64 Points
Boundary Zone: 0.010 m

UGR

Left Wall
Lower Wall
(CIE, SHR = 1.00.)

Lengthways-

12
11

Across

15
17

to luminaire axis

Illuminance Quotient (according to LG7): Walls / Working Plane: 0.409, Ceiling / Working Plane: 0.176.

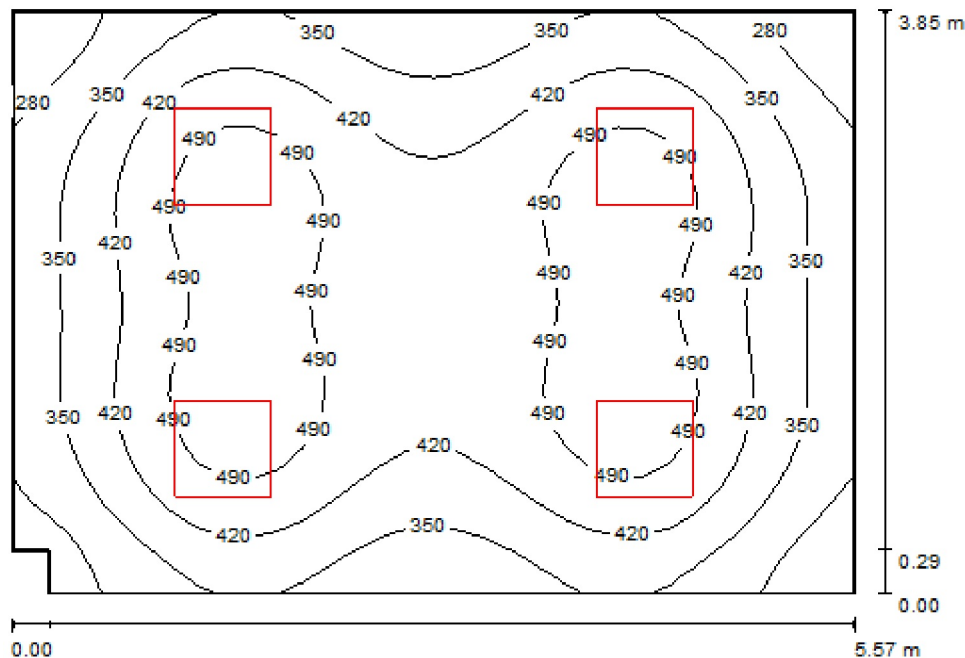
Luminaire Parts List

No.	Pieces	Designation (Correction Factor)	Φ (Luminaire) [lm]	Φ (Lamps) [lm]	P [W]
1	2	NORTHCLIFFE 1000295 Breeze 418 B33 7CR (1.000)	3464	5400	84.0
Total:			6928	10800	168.0

Specific connected load: $13.64 \text{ W/m}^2 = 4.23 \text{ W/m}^2/100 \text{ lx}$ (Ground area: 12.32 m^2)

Operator
Telephone
Fax
e-Mail

Telpa Nr.2 2STAVS / Summary



Height of Room: 2.850 m, Mounting Height: 2.850 m, Maintenance factor: 0.80

Values in Lux, Scale 1:50

Surface	ρ [%]	E_{av} [lx]	E_{min} [lx]	E_{max} [lx]	$u0$
Workplane	/	413	225	541	0.545
Floor	20	347	216	430	0.623
Ceiling	70	76	59	88	0.776
Walls (6)	50	171	52	289	/

Workplane:

Height: 0.750 m
Grid: 32 x 32 Points
Boundary Zone: 0.010 m

Illuminance Quotient (according to LG7): Walls / Working Plane: 0.409, Ceiling / Working Plane: 0.184.

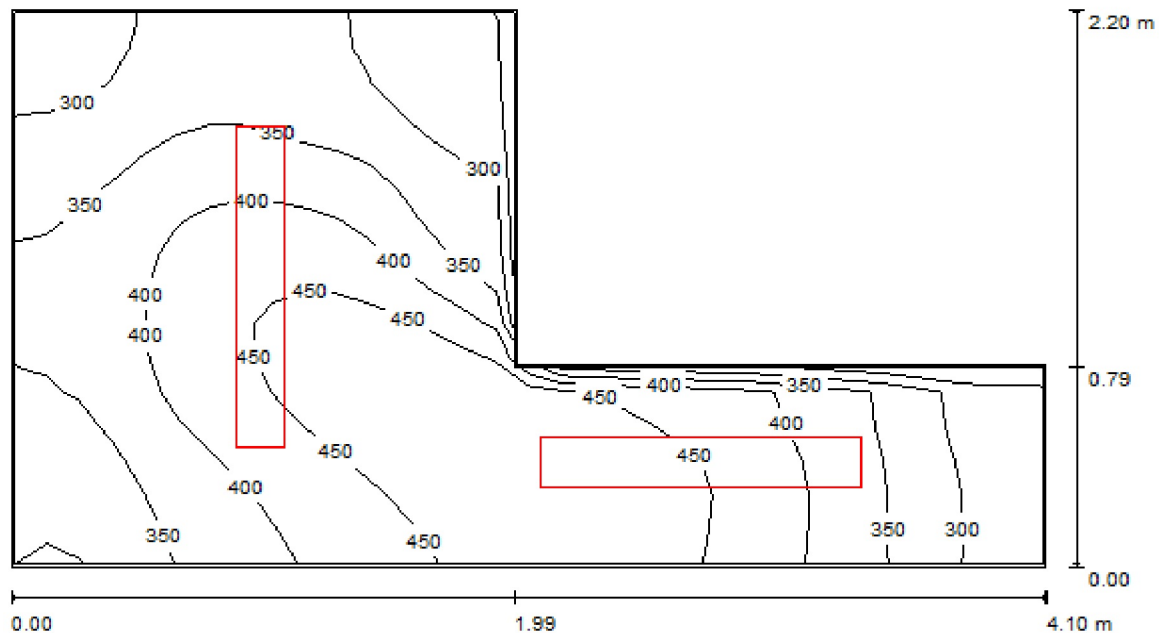
Luminaire Parts List

No.	Pieces	Designation (Correction Factor)	Φ (Luminaire) [lm]	Φ (Lamps) [lm]	P [W]
1	4	NORTHCLIFFE 1000295 Breeze 418 B33 7CR (1.000)	3464	5400	84.0
Total:			13856	21600	336.0

Specific connected load: $15.72 \text{ W/m}^2 = 3.81 \text{ W/m}^2/100 \text{ lx}$ (Ground area: 21.38 m^2)

Operator
Telephone
Fax
e-Mail

Telpa Nr.10 2STAVS / Summary



Height of Room: 2.850 m, Mounting Height: 2.850 m, Maintenance factor: 0.80

Values in Lux, Scale 1:30

Surface	ρ [%]	E_{av} [lx]	E_{min} [lx]	E_{max} [lx]	u_0
Workplane	/	379	250	497	0.658
Floor	20	262	187	336	0.713
Ceiling	70	292	127	847	0.434
Walls (6)	50	309	85	1728	/

Workplane:

Height: 0.750 m
Grid: 32 x 16 Points
Boundary Zone: 0.010 m

Illuminance Quotient (according to LG7): Walls / Working Plane: 0.971, Ceiling / Working Plane: 0.761.

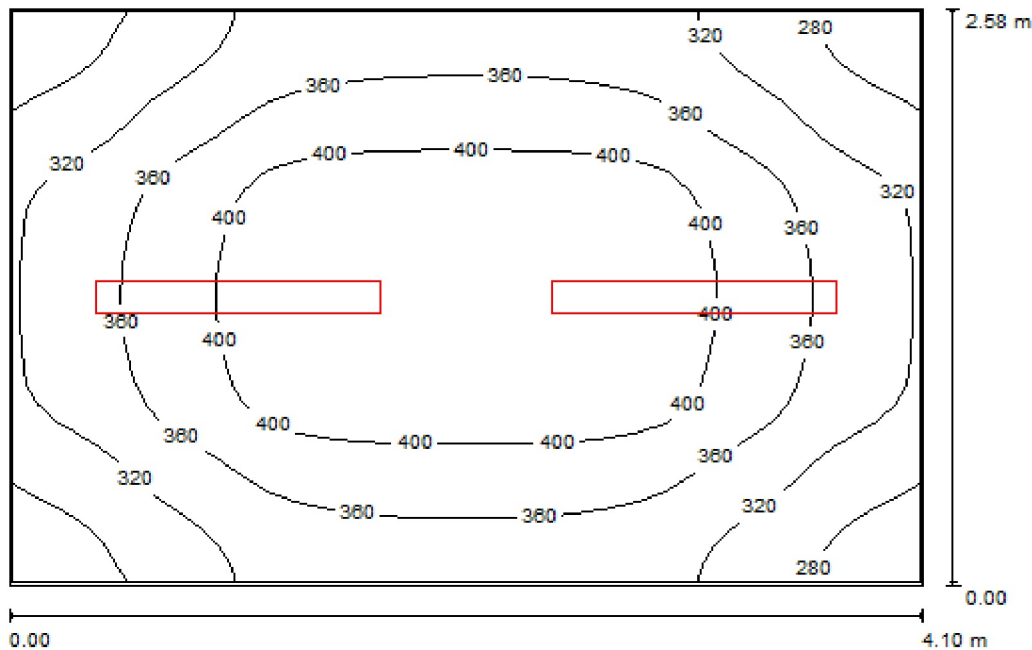
Luminaire Parts List

No.	Pieces	Designation (Correction Factor)	Φ (Luminaire) [lm]	Φ (Lamps) [lm]	P [W]
1	2	NORTHCLIFFE 1000485 Euros 236 H10 PRZ (1.000)	4623	6700	84.0
Total:			9246	13400	168.0

Specific connected load: $27.64 \text{ W/m}^2 = 7.28 \text{ W/m}^2/100 \text{ lx}$ (Ground area: 6.08 m^2)

Operator
Telephone
Fax
e-Mail

Telpa Nr.7 2STAVS / Summary



Height of Room: 2.850 m, Mounting Height: 2.850 m, Maintenance factor: 0.80

Values in Lux, Scale 1:34

Surface	ρ [%]	E_{av} [lx]	E_{min} [lx]	E_{max} [lx]	u_0
Workplane	/	361	255	433	0.707
Floor	20	269	207	314	0.771
Ceiling	70	195	105	478	0.535
Walls (4)	50	257	131	476	/

Workplane:

Height: 0.750 m
Grid: 32 x 32 Points
Boundary Zone: 0.010 m

Illuminance Quotient (according to LG7): Walls / Working Plane: 0.800, Ceiling / Working Plane: 0.542.

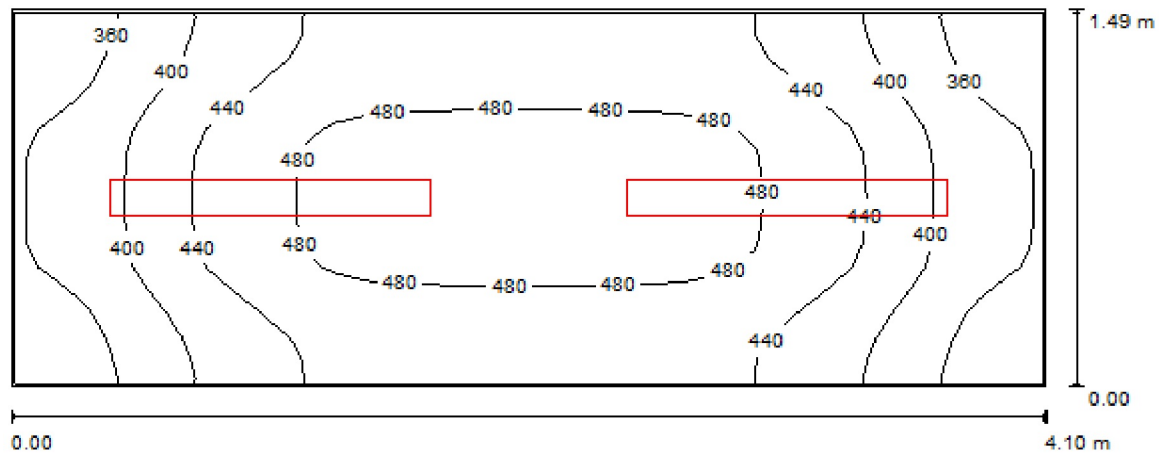
Luminaire Parts List

No.	Pieces	Designation (Correction Factor)	Φ (Luminaire) [lm]	Φ (Lamps) [lm]	P [W]
1	2	NORTHCLIFFE 1000162 Barat 236 I17 PC/PC (1.000)	4891	6700	84.0
Total:			9782	13400	168.0

Specific connected load: $15.88 \text{ W/m}^2 = 4.40 \text{ W/m}^2/100 \text{ lx}$ (Ground area: 10.58 m^2)

Operator
Telephone
Fax
e-Mail

Telpa Nr.3 2STAVS / Summary



Height of Room: 2.850 m, Mounting Height: 2.850 m, Maintenance factor: 0.80

Values in Lux, Scale 1:30

Surface	ρ [%]	E_{av} [lx]	E_{min} [lx]	E_{max} [lx]	u_0
Workplane	/	434	327	494	0.754
Floor	20	301	244	344	0.810
Ceiling	70	316	192	565	0.607
Walls (4)	50	360	128	824	/

Workplane:

Height: 0.750 m
Grid: 32 x 16 Points
Boundary Zone: 0.010 m

Illuminance Quotient (according to LG7): Walls / Working Plane: 0.983, Ceiling / Working Plane: 0.728.

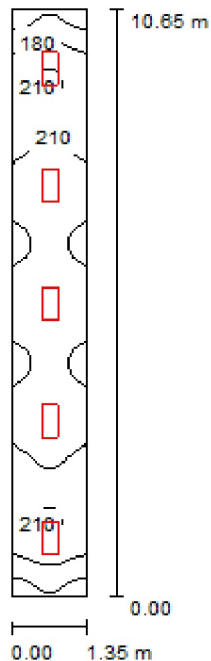
Luminaire Parts List

No.	Pieces	Designation (Correction Factor)	Φ (Luminaire) [lm]	Φ (Lamps) [lm]	P [W]
1	2	NORTHCLIFFE 1000162 Barat 236 I17 PC/PC (1.000)	4891	6700	84.0
Total:			9782	13400	168.0

Specific connected load: $27.43 \text{ W/m}^2 = 6.32 \text{ W/m}^2/100 \text{ lx}$ (Ground area: 6.13 m^2)

Operator
Telephone
Fax
e-Mail

Telpa Nr.6 2STAVS / Summary



Height of Room: 2.850 m, Mounting Height: 2.850 m, Maintenance factor: 0.80

Values in Lux, Scale 1:137

Surface	ρ [%]	E_{av} [lx]	E_{min} [lx]	E_{max} [lx]	u_0
Workplane	/	206	139	240	0.676
Floor	20	153	107	174	0.699
Ceiling	70	67	53	78	0.791
Walls (4)	50	134	56	355	/

Workplane:

Height: 0.750 m
Grid: 16 x 128 Points
Boundary Zone: 0.010 m

UGR

Left Wall
Lower Wall
(CIE, SHR = 1.00.)

Lengthways-

20
20

Across

20
19

to luminaire axis

Illuminance Quotient (according to LG7): Walls / Working Plane: 0.746, Ceiling / Working Plane: 0.325.

Luminaire Parts List

No.	Pieces	Designation (Correction Factor)	Φ (Luminaire) [lm]	Φ (Lamps) [lm]	P [W]
1	5	NORTHCLIFFE 1002583 Marengo 218 I33 (1.000)	1674	2700	42.0
Total:			8370	13500	210.0

Specific connected load: $14.61 \text{ W/m}^2 = 7.11 \text{ W/m}^2/100 \text{ lx}$ (Ground area: 14.38 m^2)